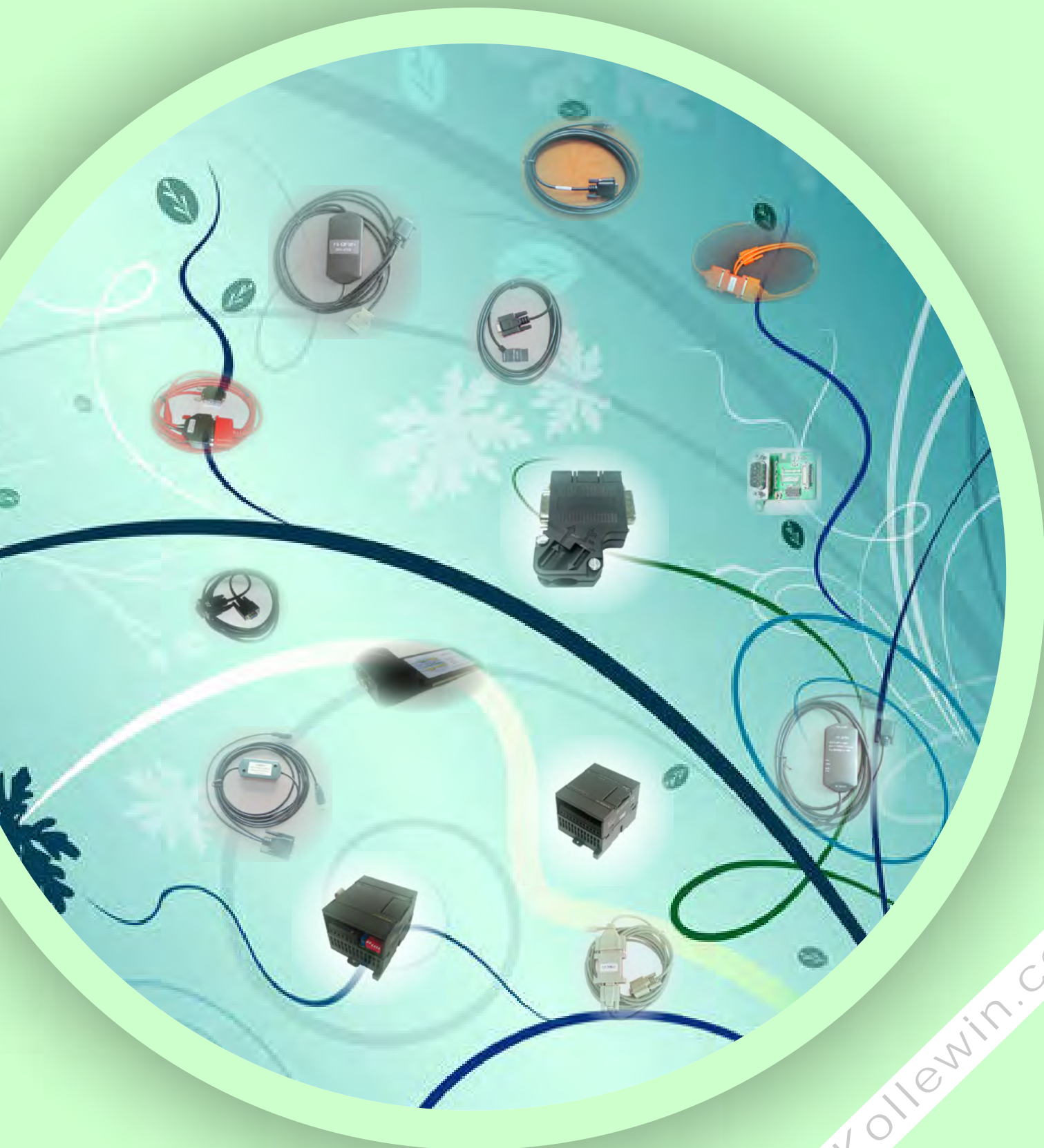




YouKong

Kollewin Technology Co., Limited Shenzhen Youkong Electromechanical CO., Ltd.

Professional PLC Programming Cable OEM Replacement Manufacturer



www.kollewin.com

About Us

Kollewin Technology Co., Limited. is a professional industry related company dealing in PLC programming cable of Siemens, Mitsubishi, Omron, GE, Schneider, AB etc brand, HMI cable, SERVO cable, inverter Cable, Siemens I/O Module, profibus connector and Proximity Switch, Photoelectric Sensor.



Our products mainly exported to Europe, North America, Asia and other countries, such as UK, France, U.S.A, Canada, Portugal, Australia, New Zealand, Saudi Arabia, Turkey, Egypt, Libya, Singapore, Bangladesh, Sri Lanka etc. Excellent Quality, competitive price, Perfect Service is our long-term target and sincerely promise to all customers and the society.



Our Programming Cable is used in many kinds of machine and project.

INDEX

CP5512,CP5611 For SIMATIC S7-200/S7-300/S7-400 PLC-----	Page2
PPI Cable For SIMATIC S7-200 PLC-----	Page3
MPI Cable For SIMATIC S7-300/S7-400 PLC-----	Page4
LOGO! Cable For SIMATIC LOGO!-----	Page4
Other Cables For Siemens-----	Page5
SC09 Cable For MITSUBISHI A/FX1S/FX1N/FX2N/FX3G/FX3U PLC-----	Page6
QC30R2 Cable For MITSUBISHI Q PLC-----	Page7
Cable For MITSUBISHI HMI,Inverter-----	Page8
Board For MITSUBISHI FX PLC-----	Page9
CN226,CIF02 Cable For OMRON PLC-----	Page10
Other Cable For OMRON PLC-----	Page11
TSXPCU1030,TSXPCX3030 Cable For Schneider PLC-----	Page12
IC690ACC901,IC690USB901 Cable For GE FANUC 90 PLC-----	Page13
1747,1761 Cable For Allen-Bradley Rockwell PLC-----	Page14
8550,8551,8513,8523 Cable For Panasonic PLC-----	Page15
NN-CNV3,USB-CNV3 Cable For Fuji PLC-----	Page16
USBACAB230 Cable For Delta PLC-----	Page16
Replacement I/O Module For SIMATIC S7-200 PLC-----	Page17
Replacement I/O Module For SIMATIC S7-300 PLC-----	Page18

CP5512,CP5611 For SIMATIC S7-200/S7-300/S7-400 PLC



CP 5512

(6GK1551-2AA00)

SIMATIC NET communication card for laptop, correspond to Siemens 6GK1551-2AA00, optoelectronic isolated, anti-lightning and surging, suitable for laptop PCMCIA 32bit CardBus slot, is used to achieve PROFIBUS/MPI/PPI/FWL communication connection between

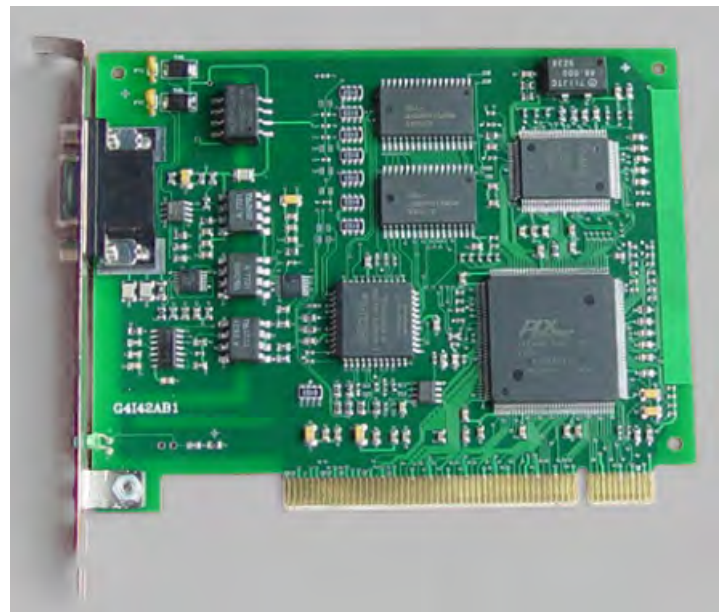


PC and SIMATIC, communication speed is 9.6Kbps--12Mbps. After switched over by the transition card, it can be used for desk computer and secondary generation ExpressCard slot laptop. CP5512 + (PCI->PCMCIA) transition card, then can be used for desk computer; CP5512 + (PCMCIA(II)->PCMCIA) transition card, then can be used for secondary generation ExpressCard slot laptop.

CP 5611

(6 GK1 561-1AA00)

CP5611 communications cards which is Anti-lightning and anti-surge, corresponding to the Siemens 6 GK1 561-1AA00, photoelectric isolation, and applied to desktop computer's PCI slots, to achieve the PROFIBUS DP / MPI / PPI communications between PC or PG and the SIMATIC network, communication rate is 9.6 Kbps ~ 12Mbps.



PPI Cable For SIMATIC S7-200 PLC

**PC/PPI** (6ES7 901-3CB30-0XA0)

RS232/PPI interface, programming cable for Siemens S7-200 PLC or TP170 touch panel, 3 meters, can replace 6ES7 901-3CB30-0XA0. Not support long distance communication and multi-master station communication.

**PC/PPI+** (6ES7 901-3CB30-0XA0)

optoelectronic isolated PC/PPI cable, support 10 bit and 11 bit modem communication, with communication indicator, automatically adjust the baud rate from 0 to 115.2Kbps, the largest communication distance of up to 2 kilometers. Not support multi-master station communication.

**USB/PPI** (6ES7 901-3DB30-0XA0)

USB/PPI interface, programming cable for Siemens S7-200 PLC and TP170 touch panel, 3 meters, with communication indicator, can replace 6ES7 901-3DB30-0XA0, the largest communication distance of up to 2 kilometers. Not support multi-master station communication.

**USB/PPI+** (6ES7 901-3DB30-0XA0)

optoelectronic isolated USB/PPI adapter, can replace: 6ES7 901-3DB30-0XA0, the largest communication distance of up to 2 kilometers. Not support multi-master station communication.

**USB/PPIM+** (6ES7 901-3DB30-0XA0)

optoelectronic isolated USB Siemens S7-200PLC multi-master station PPI programming cable, directly use the STEP7 MicroWIN software to communicate, no need to install driver, support PPI, multi-master station PPI and advanced PPI, support 187.5Kbps high speed communication, just the same as 6ES7 901-3DB30-0XA0, 3 meters, with communication indicator.

MPI Cable For SIMATIC S7-300/S7-400 PLC



PC / MPI (6ES7 972-0CA23-0XA0)
Non-isolated Siemens S7-300PLC programming cable, 5m.



PC / MPI+ (6ES7 972-0CA23-0XA0)
optoelectronic isolated RS232/MPI, Siemens S7-300/400 PLC Programming adapter cable, with communication indicator, can replace Siemens 6ES7 972-0CA23-0XA0, automatically adjust the communication speed from 19.2Kbps to 115.2Kbps for the PC port, automatically adjust the communication speed from 19.2Kbps to 187.5Kbps for the MPI interface. Can connect PLC and the touch panel of third party factory to communicate. It doesn't support profibus function.



USB / MPI+ (6ES7 972-0CB20-0XA0)
optoelectronic isolated USB/MPI, Siemens S7-300/400 PLC Programming adapter cable, 3 meters, with communication indicator, can replace Siemens 6ES7 972-0CB20-0XA0, automatically adjust the communication speed from 19.2Kbps to 115.2Kbps for the PC port, automatically adjust the communication speed from 19.2Kbps to 187.5Kbps for the MPI interface. It doesn't support profibus function.

LOGO! Cable For SIMATIC LOGO!



LOGO! PC - CABLE (6ED1 057-1AA00-0BA0)
RS232 optoelectronic isolated programming cable for Siemens LOGO!, 3 meters, can replace Siemens 6ED1 057-1AA00-0BA0



LOGO! USB - CABLE
USB optoelectronic isolated programming cable for Siemens LOGO!, 2.5 meters, with communication indicator.

Other Cables For **Siemens**

MPI extension cable (6ES7 901-0BF00-0AA0)

Communication cable between S7-200/300 PLC and Siemens touch panel, 5 meters.

RS232 cable (6ES7901-1BF00-0XA0)

RS232 cable for PC/MPI adapter, 5 meters.

OP programming cable (6XV1440-2KH32)

Siemens OP programming cable, 3 meters.

PC/TTY (6ES5 734-1BD20)

The cable between RS232 and Siemens S5 series PLC programming interface (DB15), Used for PLC programming software and monitored control system for S5 series, 3 meters.



420/440-2M

Siemens 420/440/430 inverter long-distance operator panel cable, 2 Meters.

6ES7901-PG702

Siemens S7-200 to PG702 cable, 2 Meters.

6ES7 290-6AA20-0XA0

Siemens S7-200 PLC I/O extension module connect cable, 1 Meter.

6ES7 290-6AA20-0XA0-2M

Siemens S7-200 PLC I/O extension module connect cable, 2 Meters.

6ES7 368-3BC51-0AA0

Siemens S7-300 PLC IM360 and IM361 extension cable, 2 Meters.

6ES7 368-3BF01-0AA0

Siemens S7-300 PLC IM360 and IM361 extension cable, 5 Meters.

6ES7 368-3CB01-0AA0

Siemens S7-300 PLC IM360 and IM361 extension cable, 10 Meters.

6ES7 390-1AF30-0AA0

S7-300 PLC rail, 530 MM length.

6ES7 390-1AJ30-0AA0

S7-300 PLC rail, 830 MM length.

6ES7 972-0BA12-0XA0

Profibus connector, without PG port, 90 degree

6ES7 972-0BB12-0XA0

Profibus connector, with PG port, 90 degree

6ES7 972-0BA41-0XA0

Profibus Connector, without PG port, 35 degree

6ES7 972-0BB41-0XA0

Profibus Connector, with PG port, 35 degree

6ES7 392-1AJ00-0AA0

S7-300 front connector (20 pin)

6ES7 392-1AM00-0AA0

S7-300 front connector (40 pin)



SC09 Cable For MITSUBISHI A/FX1S/FX1N/FX2N/FX3G/FX3U PLC



SC-09

RS232/RS422 interface, 3 meters length. Standard programming cable for all Mitsubishi MELSEC FX and A series PLC's. Two kinds: injection moulding cheap one and with IC & communication indicator dear one.



SC-09+

optoelectronic isolated SC-09 adapter, communication distance of up to 2 kilometers (9600bps). in particular, apply to the industrial scene.



USB-SC09

USB/RS422 interface, adapter for Mitsubishi FX & A series PLC, 3 meters, with communication indicator, the largest communication distance of up to 2 kilometers.



USB-SC09-FX

USB/RS422 interface, adapter for Mitsubishi FX2N/FX1N/FX0/FX0S/FX1S/FX3U series PLC, 2.5 meters, with communication indicator, the largest communication distance of up to 2 kilometers. Compatible with FX-USB-AW.



SC-10

PLC remote communication with modem, go on long-distance communication for FX series (FX2/FX2n/FX0/FX0n..) PLC with modem connecting telephone wire, the other function is the same as SC-09.

QC30R2 Cable For MITSUBISHI Q PLC**QC30R2**

RS232/RS232 interface, cable for Mitsubishi Q series PLC, 3 meters.

**QC30R2+**

Optical Isolated, RS232/RS232 interface, cable for Mitsubishi Q series PLC, 4.5 meters.

**USB-QC30R2**

USB/RS232 interface, adapter for Mitsubishi Q series PLC, 3 meters.

Cable For MITSUBISHI HMI, Inverter

FX-20P-CAB0

Communication cable from Mitsubishi HPP to FX0/FX2n/FX1N series PLC

FX-20P-CAB

Communication cable from HPP to FX2 series PLC

FX-20P-CADP

Adapter cable for Mitsubishi FX0/FX2n/FX1n series PLC, 0.4 Meters.

FX-422CAB0

Communication cable between Mitsubishi FX-232AW and FX2N/FX1N/FX0N/FX1S/FX0 series PLC, 1.5M

F2-232CAB-1

Transfer cable between computer and FX-232AW/FX0N-232ADP/50DU, 3 Meters

FX-232CAB-1

Programming cable between computer and F940/920 Touch Panel, 2 Meters

FX-50DU-CAB0

Cable to connect F940/F930/F920 to FX0/FX2n series PLC, 3/10/30 Meters

FX-40DU-CAB

Cable to connect F940/F930/F920 to FX2 or A Series PLC, 3M

FX9GT-CAB0

communication cable between A970GOT and FX0s/FX0n/FX2n/FX1n series PLC, 3M

AC30R4-25P

Communication cable between A970GOT and FX2 & A series PLC, 3M

GT01-C30R4-8P

Communication cable between Mitsubishi GT11/GT15 touch panel and FX3U/FX2N/FX1N, 3/10/30 meters.

GT01-C30R4-25P

Communication cable between Mitsubishi GT11/GT15 touch panel and A/QnA series PLC.

GT01-C30R2-6P

Communication cable between Mitsubishi GT11/GT15 touch panel and Q series PLC. 3 Meters.

GT01-C30R2-9S

Mitsubishi GT11/GT15 touch panel RS232 Serial Port programming cable, 3 Meters.

FR-CB201/203/205

Mitsubishi A540/E540 inverter panel cable, with E54P connector, 1/3/5M

FR-485 FR-485 + (optoelectronic isolated)

Communication cable from Mitsubishi A540/E540 inverter to computer, RS232/RS485 interface, 3 Meters, used for computer monitored control system of inverter, the largest communication distance of up to 1.2 kilometers.



Board For MITSUBISHI FX PLC



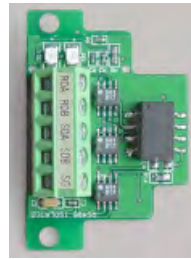
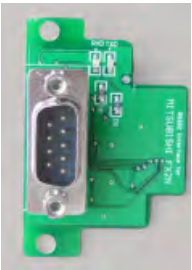
FX1N-232-BD

FX1N-232-BD

FX1N-232-BD

FX1N-232-BD

Board for FX1N PLC, anti-static electricity & surging protection



FX2N-232-BD

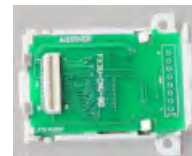
FX2N-422-BD

FX2N-485-BD

FX2N-485-BD+

FX2N-USB-BD

Board for FX2N PLC, anti-static electricity & surging protection



FX3U-232-BD

FX3U-422-BD

FX3U-485-BD

FX3U-CNV-BD

FX3U-USB-BD

Board for FX3U PLC, anti-static electricity & surging protection



CN226,CIF02 Cable For OMRON PLC



FS-CN226 (CS1W-CN226)

Correspond to Omron CS1W-CN226,RS232 interface Omron PLC programming cable directly for Omron CS/CJ , CQM1H , CPM2C series PLC.No need to be switched over by CS1W-CN114,2.5 Meters.



FS-CN226+ (CS1W-CN226)

optoelectronic isolated FS-CN226 cable,3 meters,with communication indicator.



USB-CN226

USB interface,cable directly for CS/CJ,CQM1H,CPM2C series PLC,3 Meters.No need to be switched over buy CS1W-CN114, with communication indicator.



FS-CIF02 (CQM1-CIF02/01)

Correspond to Omron CQM1-CIF02/01,RS232 interface Omron PLC programming cable,3 meters,applicable PLC is the same as the above.



FS-CIF02+ (CQM1-CIF02/01)

optoelectronic isolated FS-CIF02 interface cable,3 meters, with communication indicator.



USB-CIF02

USB interface Omron series PLC programming cable,with communication indicator,cable connection between CQM1,CPM1, CPM1A, CPM2A,C200HS,C200HX/HG/HE,SRM1 series PLC and the computer. After connected with CS1W-CN114 cable,it can also be connected with CS/CJ,CQM1H and CPM2C series PLC. 3 Meters

Other Cable For OMRON PLC

USB-XW2Z-200S

USB/RS232 interface,cable for Omron PLC Programming,3 Meters,RS232 interface with communication indicator.

XW2Z-200S

RS232/RS232 interface Omron PLC programming cable,2 meters.
length: 2 meters

XW2Z-200S+

optoelectronic isolated XW2Z-200S cable,communication distance of up to 2 kilometers.

USB-CIF31

Convert cable from USB to RS232(standard DTE interface).1 meter,with communication indicator,support traditional RS232 PLC prgramming cables.

FS-CIF11

compatible with CPM1-CIF11/CIF12,can connect CPM1A/2A,CQM1,C200H α PLC outer interface or RS232 interface,4 lines RS422 and 2 lines RS485 interface output,support multi-station communication,standard lead rail installation.

FS-CIF13

Equal to Omron CPM1-CIF11/CIF12+CS1W-CN114,can connect CS/CJ,CQM1H and CPM2C PLC outer interface or RS232 interface,4 lines RS422 and 2 lines RS485 interface output,support multi-station communication,standard lead rail installation.

TSXPCU1030,TSXPCX3030 Cable For Schneider PLC



TSXPCU1030

RS232 interface Schneider PLC programming cable, RS232/RS485 interface, 3 meters, master station mode.



TSXPCU1030+

optoelectronic isolated TSXPCU1030 cable.



TSXPCX3030

USB/RS485 interface cable for Schneider PLC programming, 2.5 meters, with master/slave switch, connect the TER and AUX port of PLC, the largest communication distance of up to 2 kilometers.



TSXPCX3030+

optoelectronic isolated USB interface TSXPCX3030 cable, connect the TER port of PLC.



TSX08PRGCAB (TSXPCX1031)

RS232/RS485 interface cable for Schneider PLC programming, 3 meters, with master/slave switch, used for programming communication or other communication such as MODBUS.



FSACC01

RS485 optical isolated junction box for Modicon TSX Series PLC, is fully compatible with Schneider TSXPACC01, anti-lightning, anti-jamming and support multi-point communications, the largest communication range is 2km.

IC690ACC901,IC690USB901 Cable For GE FUNC 90 PLC



IC690ACC901

RS232/SNP interface GE 90 series PLC programming cable, 3 meters. Two shape: injection moulding integral structure and adapter with communication indicator.



IC690ACC901+

optoelectronic isolated IC690ACC901 cable, communication distance of up to 1.5 kilometers.



IC690USB901

USB/SNP interface GE 90 series PLC programming cable, 3 meters, with communication indicator, the largest communication distance of up to 1.5 kilometers.

1747,1761 Cable For AB Rockwell PLC



1747-PIC

AB SLC-500 series PLC programming cable, RS232/DH-485 interface, 3 meters.



1747-CP3

ALLEN BRADLEY SLC 5/03, 5/04, 5/05 PLC programming cable



USB-1747-CP3

USB interface ALLEN BRADLEY SLC 5/03, 5/04, 5/05 PLC programming adapter.



1761-CBL-PM02

ALLEN BRADLEY MicroLogix 1000 Series PLC programming cable.



USB-1761-CBL-PM02

USB interface ALLEN BRADLEY MicroLogix 1000 Series PLC programming adapter



8550,8551,8513,8523 Cable For Panasonic PLC



USB8550
 USB/RS422 interface Panasonic PLC adapter for FP1/FP3/FP5 PLC (need Convert cable), 1 meter, with communication indicator, the largest communication distance of up to 2 kilometers.



AFP5523
 Communication cable between Panasonic FP3,FP5 series PLC and AFP8550 adapter or HPP,3 meters.



USB8551
 Equal to USB8550+AFP1523 or USB8550+AFP5523,USB interface cable directly for Panasonic FP1,FP3/FP5 PLC programming, no need convert cable, 3 meters, with communication indicator.



USB8513
 USB interface programming cable for Panasonic FP0,FP2,FP-M series PLC, 3 meters, with communication indicator, suitable for all softwares.



AFP8550
 RS232/RS422 interface Panasonic PLC adapter, 1.5 meters.



AFC8513+
 optoelectronic isolated AFC8513 cable



AFP8550+
 optoelectronic isolated AFP8550 adapter, communication distance of up to 2 kilometers.



AFC8523
 Panasonic PLC HPP cable, Communication cable between HPP and FP0,FP2,FP-M series PLC, 3 meters.



AFP8551
 Equal to AFP8550+AFP1523 or AFP8550+AFP5523,RS232 interface cable directly for Panasonic FP1,FP3/FP5 PLC programming, no need convert cable, 3 meters.



AFC8503
 Panasonic NAIS GT10/GT30 touch panel downloading cable, 2m/3m



AFC8513
 Panasonic PLC computer programming cable, Communication cable between computer and FP0,FP2,FP-M series PLC, 3 meters.



BFV9062/9063/9065
 Panasonic, Fuji, Sanken inverter panel cable, 2m/3m/5m.

NN-CNV3,USB-CNV3 Cable For Fuji PLC



NN-CNV3

RS232 interface Fuji N series PLC (NB, NJ, NS, NWO, etc.)programming cable, RS232/RS422 interface, 3 meters.



NN-CNV3+

optoelectronic isolated NN-CNV3 interface, built-in anti-lightning protection, communication distance of up to 1.2 kilometers, strong anti-interference, in particular, apply to the industrial scene.



USB-CNV3

USB interface Fuji N Series PLC (NB, NJ, NS, NWO, etc.)programming cable, USB/RS422 interface, 3 meters, with communication indicator, the largest communication distance of up to 1.5 kilometers.

USBACAB230 Cable For Delta PLC



USBACAB230

USB interface Delta DVP series PLC programming cable, USB/RS232 interface,connect COM1 interface of PLC,3 meters,with communication indicator.

Replacement **DIGITAL Module** For SIMATIC **S7-200 PLC**



6SM7 221-1BH22-OXAO
EM221 16 DI 24V DC



6SM7 221-1BL22-OXA0
EM221 32 DI 24V DC



6SM7 222-1BH22-OXAO
EM222 16 DO 24V DC



6SM7 222-1BL22-OXAO
EM222 32 DO 24V DC



6SM7 222-1HH22-OXA0
EM222 16 DO RELAY



6SM7 223-1BH22-OXAO
EM223 8 DI / 8 DO 24V DC



6SM7 223-1BL22-OXA0
EM223 16 DI / 16 DO 24V DC



6SM7 223-1PH22-OXAO
EM223 8 DI / 8 DO RELAY



6SM7 223-1PL22-OXA0
EM223 16 DI / 16 DO RELAY

Replacement **ANALOG Module** For SIMATIC **S7-200 PLC**



6SM7 231-0HC22-OXA0
EM231 4 AI x 12 Bits



6SM7 231-7PC22-OXA0
EM231 4 RTD



6SM7 231-7PD22-OXA0
EM231 4 TC



6SM7 231-7PH22-OXA0
EM231 8 TC



6SM7 231-OHH32-OXA0
EM231 8 AI x 16 Bits



6SM7 232-OHB22-OXA0
EM232 2 AO x 12 Bits



6SM7 232-OHD22-OXA0
EM232 4 AO x 12 Bits



6SM7 235-0KD22-OXA0
EM235 4 AI / 1 AO x 12 Bits

Replacement **DIGITAL** Module For SIMATIC **S7-300** PLC



6SM7 321-1BH02-0AA0
SM321 16 DI 24 VDC



6SM7 321-1BL00-0AA0
SM321 32 DI 24 VDC



6SM7 322-1BH01-0AA0
SM322 16 DO 0.5A 24 VDC



6SM7 322-1BL00-0AA0
SM322 32 DO 0.5A 24V DC



6SM7 322-1HH01-0AA0
SM322 16 DO RELAY



6SM7 323-1BL00-0AA0
SM323 16 DI 24V DC/ 16DO 24V DC

Replacement **ANALOG** Module For SIMATIC **S7-300** PLC



6SM7 331-1KF01-0AB0
SM331 8 AIx 13 Bits



6SM7 332-5HD01-0AB0
SM332 4 AOx 12 Bits



Kollewin Technology Co., Limited

Shenzhen Youkong Electromechanical CO., Ltd.

Address: Room No.8C, Entrance 1, Milan Gongyu, Huaguo Rd No.36, Shekou, Shenzhen, China(518067)



lth_lxh@hotmail.com



redpeachcathy



Http://www.kollewin.com



sales@kollewin.com redpeachluo@gmail.com



86-755-26898905